

FEATURES:

- Single port Tab-Down with internal magnetics for 1000 Base-T
- 350uH minimum OCL with 8mA bias current
- Internal magnetics options available
- Minimum 2250VDC isolation
- Recognized by UL 60950-1

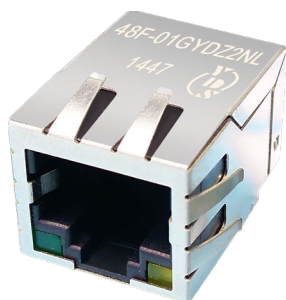
공식대리점 (주)퓨전텍

TEL : +82-31-392-8906

FAX : +82-31-392-8907

E-MAIL : sales@fusiont.co.kr

www.fusiont.co.kr



RJ45 Jack
48F SERIES
 With Magnetics
 Through Hole
 Single Port
 100/1000 Base-T
 TAB Down



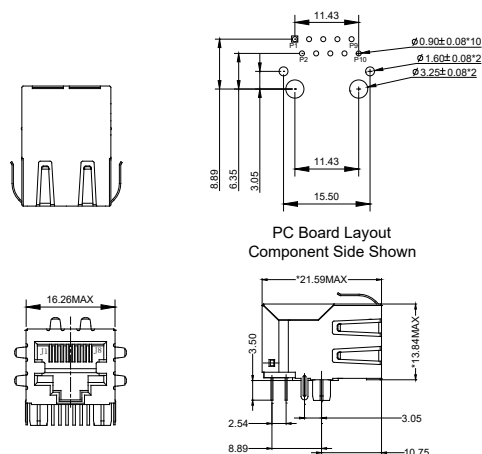
Electrical Specifications@25°C-Operating Temperature 0°C to 70°C

Part Number	Turns Ratio (±5%)	Insertion Loss (dB MAX)	Return Loss (dB MIN @100Ω±15Ω)				Differential to Common Mode Rejection (dB MIN)			Cross talk (dB MIN)			Hipot (VDC)
		0.3-100MHz	1-30 MHz	40 MHz	50 MHz	60-80 MHz	30 MHz	60 MHz	100 MHz	30 MHz	60 MHz	100 MHz	
48F-01ND2NL	1CT:1CT	-1.2	-16	-13.5	-11.5	-10	-35	-32	-30	-40	-36	-30	2250
48F-01GYDS2NL	1CT:1CT	-1.2	-16	-13.5	-11.5	-10	-35	-32	-30	-40	-36	-30	2250
48F-01GYDP2NL	1CT:1CT	-1.2	-16	-13.5	-11.5	-10	-35	-32	-30	-40	-36	-30	2250

Mechanical and Dimension

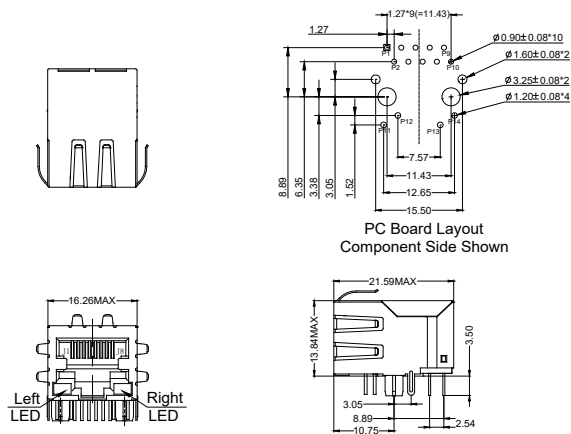
NO LED JACK

48F-01ND2NL



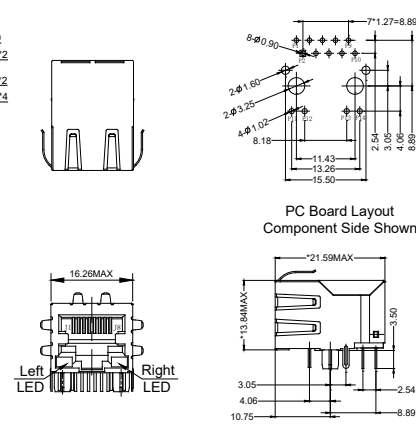
LED-S JACK

48F-01GYDS2NL



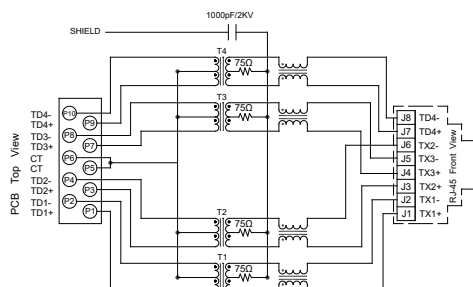
LED-P JACK

48F-01GYDP2NL

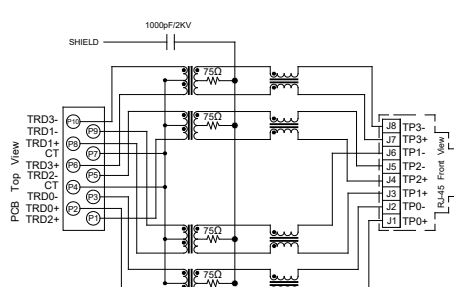


Schematics

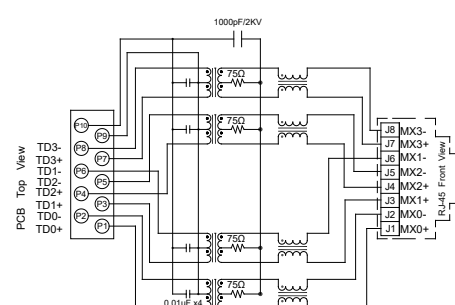
01



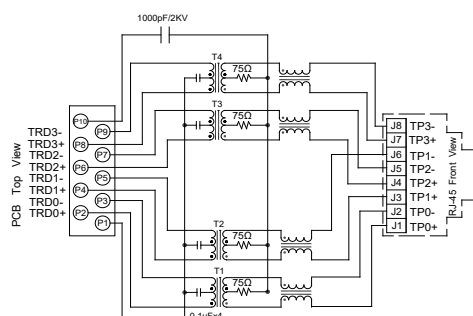
02



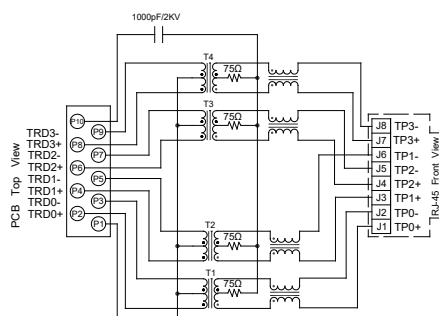
09A



10



19



20

